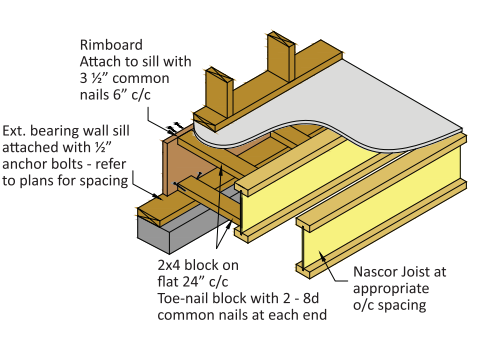


FRAMING DETAILS

HOLE CUTTING CHARTS

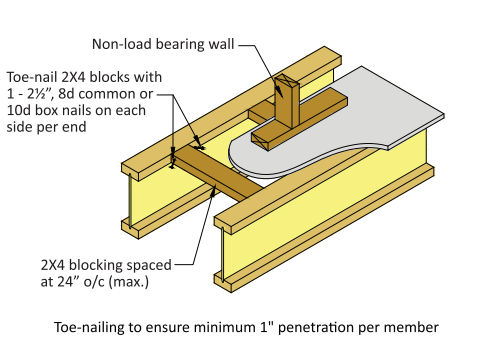
NJH #3C
PARALLEL RIM W/ LATERAL BRACE



Note: Additional lateral bracing may be required to meet local building code.

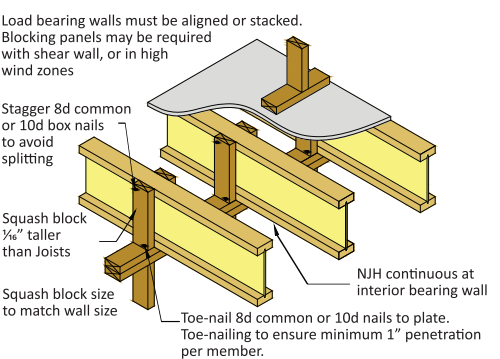
NJH #7

NON-LOAD BEARING WALL SUPPORT



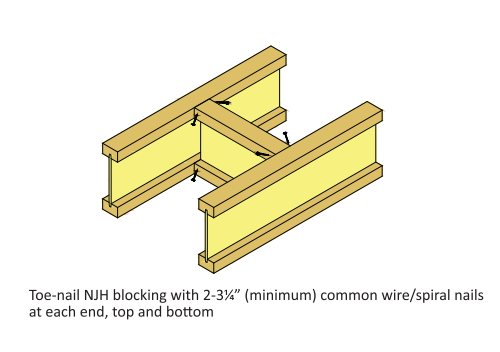
NJH #10 B

CENTER BEARING (SQUASH BLOCKS)



ND-BLK1A

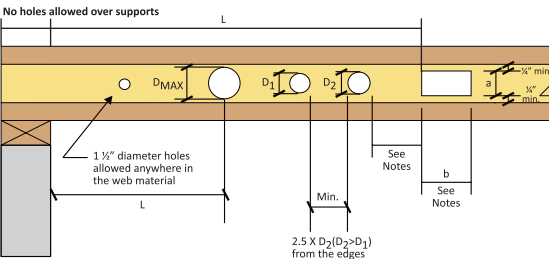
BLOCKING INSTALLATION



ALLOWABLE ROUND HOLE LOCATIONS

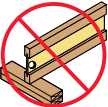
Joist Series	Clear Span (ft)	Hole Diameter (in.)											
		2	4	5	6	7	8 3/8	9	10	10 1/2	11	12	12 1/2
		Minimum Distance from The Inside Edge of The Support to Center of The Hole (ft-in)											
NJH10	10	1'-0"	1'-0"	1'-0"	1'-7"								
	12	1'-0"	1'-5"	2'-0"	2'-8"								
	14	1'-0"	2'-6"	3'-2"	3'-9"								
	16	2'-1"	3'-7"	4'-3"	4'-11"								
	18	3'-2"	4'-8"	5'-5"	6'-1"								
NJH12	10	1'-0"	1'-0"	1'-0"	1'-0"	1'-2"	1'-8"						
	12	1'-0"	1'-0"	1'-2"	1'-9"	2'-3"	2'-9"						
	14	1'-0"	1'-8"	2'-3"	2'-10"	3'-4"	3'-10"						
	16	1'-2"	2'-9"	3'-5"	4'-0"	4'-6"	5'-0"						
	18	2'-3"	3'-10"	4'-6"	5'-1"	5'-8"	6'-2"						
NJH14	20	3'-4"	4'-11"	5'-8"	6'-3"	6'-10"	7'-4"						
	12	1'-0"	1'-0"	1'-0"	1'-0"	1'-7"	2'-2"	3'-3"	3'-10"				
	14	1'-0"	1'-0"	1'-0"	1'-0"	1'-5"	2'-8"	3'-3"	4'-5"	5'-0"			
	16	1'-0"	1'-0"	1'-0"	1'-7"	2'-5"	3'-9"	4'-5"	5'-7"	6'-2"			
	18	1'-0"	1'-2"	1'-10"	2'-8"	3'-7"	4'-11"	5'-7"	6'-9"	7'-4"			
NJH16	20	1'-0"	2'-2"	2'-11"	3'-9"	4'-8"	6'-1"	6'-9"	7'-11"	8'-7"			
	22	1'-11"	3'-3"	4'-0"	4'-11"	5'-10"	7'-3"	7'-11"	9'-1"	9'-9"			
	24	3'-0"	4'-4"	5'-2"	6'-0"	6'-11"	8'-5"	9'-1"	10'-4"	11'-0"			
	12	1'-0"	1'-0"	1'-0"	1'-0"	1'-0"	1'-4"	1'-9"	2'-3"	2'-7"	2'-10"	3'-3"	3'-6"
	14	1'-0"	1'-0"	1'-0"	1'-0"	1'-6"	2'-5"	2'-10"	3'-5"	3'-8"	3'-11"	4'-5"	4'-8"
NJH16	16	1'-0"	1'-0"	1'-1"	1'-10"	2'-7"	3'-6"	3'-11"	4'-7"	4'-10"	5'-1"	5'-7"	5'-10"
	18	1'-0"	1'-3"	2'-1"	2'-11"	3'-8"	4'-8"	5'-1"	5'-8"	6'-0"	6'-3"	6'-9"	7'-0"
	20	1'-0"	2'-4"	3'-2"	4'-0"	4'-10"	5'-10"	6'-3"	6'-10"	7'-2"	7'-5"	8'-0"	8'-3"
	22	1'-7"	3'-5"	4'-4"	5'-2"	5'-11"	7'-0"	7'-5"	8'-1"	8'-4"	8'-8"	9'-2"	9'-5"
	24	2'-7"	4'-6"	5'-5"	6'-3"	7'-1"	8'-2"	8'-7"	9'-3"	9'-7"	9'-10"	10'-4"	10'-7"
NJH16	26	3'-8"	5'-8"	6'-7"	7'-5"	8'-3"	9'-4"	9'-9"	10'-5"	10'-9"	11'-0"	11'-7"	11'-10"

- The distance between the edge of the nearest support and the centreline of a round hole shall not be less than that shown in the tables. Allowable rectangular hole locations are also available - please contact Nascor for more information.
- Tables are based upon maximum uniformly distributed specified loads of 40 psf live and 25 psf dead, and only applicable to simple span.
 - Tables can be used for Joist spacing of 24" or less. Joist spans in hole tables have not been verified for these Joists and are shown for informational purposes only. Verify that the Joist selected will work for the span and loading conditions needed before checking hole location.
 - The maximum size round or rectangular hole permitted to be installed in the webs shall leave a minimum of $\frac{3}{8}$ " of web material between the top and bottom of the hole and the adjacent flange.
 - The maximum length of a rectangular hole, measured parallel to flanges, shall be $1\frac{1}{2}$ times the hole height.
 - A $1\frac{1}{2}$ " diameter round hole can be installed anywhere in the web except directly over a support. See note below for further instructions related to installing multiple holes.
 - When installing multiple holes in the web the spacing between the edges of the holes must be as follows:
 - The spacing required between the edges of round holes must be 2.5 times the diameter of the largest hole.
 - The spacing required between the edges of rectangular holes must be 5 times the length of the largest hole.
 - The spacing between the edges of a round and rectangular hole must be 5 times the length of the largest hole or 5 times the diameter of the round hole whichever is greater.
 - Do not cut or nick flanges when cutting holes in the web.
 - Whenever possible, installed holes shall be centered vertically in the web.
 - Cutting a radius on the corners of a rectangular hole is recommended.
 - For spans that are intermediate to those given in the table, the user must select the greater distance of the two adjacent spans.
-

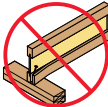


HANDLING & INSTALLATION NOTES

- Keep Nascor Joists elevated and place on a solid, dry surface.
- Avoid prolonged exposure to the elements.
- Do not stack building materials on Joists that are not properly supported, braced and sheathed to provide lateral support.
- Sheathing must be properly attached to the Joists before any loads can be applied to the system.
- Brace the ends of the cantilevers to prevent movement.
- Loading or walking on an improperly braced floor system can result in Joist roll over or buckling, increasing the chance of personal injury or damage to the floor Joists.



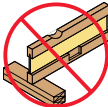
DO NOT
drill any holes
over support



DO NOT
split the flange
Ensure proper
toe-nailing.



DO NOT
bevel cut the Joist
past the inside face



DO NOT
cut or notch top
or bottom
flanges